

DISCO CRUSH

MULTI-USE EYE & FACE SPARKLE

Price: €34



WHAT IT IS

A super-creamy, multi-dimensional, pearlized eye & face sparkle with unique reflective qualities and glitter-like effects for a super-saturated wet-look shine! This special effect, multi-use formula contains light-shifting dimensional pearls for remarkable iridescence that intensifies as light hits from different angles.

WHAT MAKES IT AMAZING

♥ HIGH-PIGMENT POP OF COLOR

- Multi-dimensional light-shifting sparkle formula
- One-swipe smooth & creamy application with buildable intensity
- Super-saturated sparkle with mirror-like shine & intensity
- Smooth application with aid of wet-tech technology
- Adds versatility to your traditional eye shadow palette. A makeup bag life saver!
- Can be applied on eyes and face

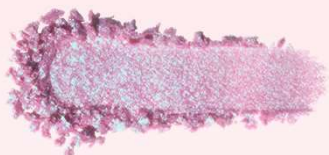


Formulated without: Gluten, Silicone and Mineral Oil

6 SHADES

DISCO CRUSH

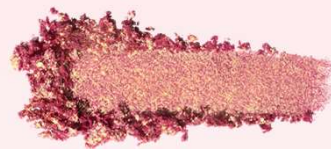
MULTI-USE EYE & FACE SPARKLE



Show Off
IRIDESCENT LAVENDER
W/ HOLOGRAPHIC SPARKLE



Heart Eyes
SHIFTING WARM
ROSE GOLD SPARKLE



Mystic Pink
PETAL PINK
W/ GOLD SPARKLE



Fairy Dust
OPALESCENT
PLATINUM SPARKLE



Magic Sparkles
ROSÉ CHAMPAGNE
SPARKLE



Hypnotic
LIGHT GOLD
SPARKLE

PRO TIPS

HOW TO APPLY: Press, Swipe & Sparkle!

For precise application use a clean fingertip, press & swipe onto eyelids or cheeks, and even décolleté. For a wash of shimmer, dust lightly across area of preference with a fluffy brush.

For a sheer look, tap your finger twice on the eye shadow, then tap on lids.

TF PRO TIP: Use as a highlighter to add an eye-catching sparkle on high points of face, inner corners of eyes, or upper browbone.

Use as an all-over eye shadow or topper for high-impact, sparkling eye looks.

TF BFFs



Better Than Sex
Foreplay Mascara Primer



Better Than Sex
Mascara



Better Than Sex Eyeliner or
Killer Liner Eyeliner



Cloud Crush
Blush